



**Android™ Driver's App  
Update Version 1.89  
Samsung Galaxy Tab® 3**



#### **COPYRIGHT NOTICE**

This is an unpublished work protected by the United States copyright laws and is proprietary to Teletrac, Inc. and its affiliates. Disclosure, copying, reproduction, merger, translation, modification, enhancement or use by anyone other than authorized employees or licensees of Teletrac, Inc. and its affiliates without the prior written consent of Teletrac, Inc. and its affiliates is prohibited. This copyright notice should not be construed as evidence of publication.

#### **DISCLAIMER**

Teletrac, Inc. and its affiliates make a genuine effort to ensure the accuracy and quality of these materials. However, Teletrac, Inc. and its affiliates make no warranty whatsoever, express or implied, with respect to the completeness or accuracy of the contents herein and accepts no liability of any kind including (but not limited to) performance, merchantability, fitness for any particular purpose, or any losses or damages of any kind caused or alleged to be caused directly or indirectly from this document.

#### **TRADEMARK NOTICES**

Fleet Director® is a registered trademark of Teletrac, Inc.

Samsung and Galaxy Tab are trademarks of Samsung Electronics Co., Ltd.

Copyright © 2015 Teletrac, Inc.

All Rights Reserved

Teletrac, Inc.

7391 Lincoln Way

Garden Grove, CA 92841

[www.teletrac.com](http://www.teletrac.com)

1.800.TELETRAC



## Table of Contents

Android™ Driver App Update V1.89 .....	1
Android™ Driver's App Map Update.....	9
Updating Maps via Disconnect Screen (Tablet not Paired) .....	10
Updating Maps via Driver's App (Tablet Paired).....	12

## Android™ Driver App Update V1.89

This document describes the process for updating the Teletrac Driver's Application for the Samsung Galaxy Tab® 3. Follow the steps below to update the Teletrac Driver's Application.

1. Turn the device off.
2. Press and hold the Power/Lock key until device turns on.
3. When the Samsung logo displays press and hold the Volume Down key until the lock screen displays.
- 💡 When the lock screen displays, **Safe Mode** is shown in the lower left corner of the screen (If Safe Mode does not show, repeat steps 1-4).

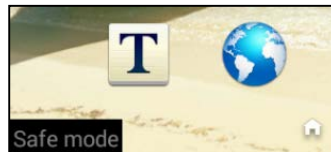


Figure 1- Safe mode

4. Bring the Settings option by doing a swipe down motion from the top of the screen.



Figure 2- Swipe Down Motion

5. Click on the **Settings** Icon.

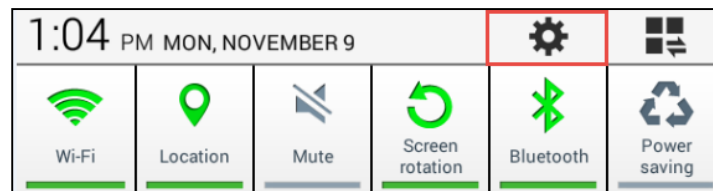


Figure 3- Settings Icon

6. Scroll down and select **Application Manager**.

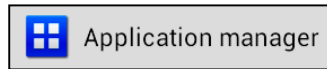


Figure 4- Application Manager

7. Select **Driver's App** under the **Downloaded** section.

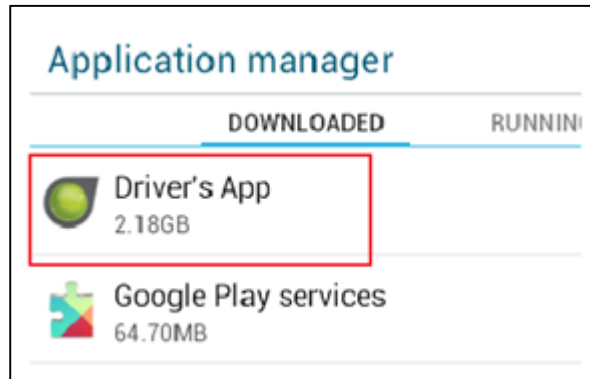


Figure 5- Application Manager Downloaded

8. Select **Uninstall**.

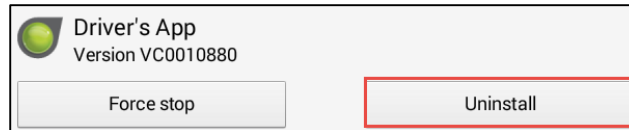


Figure 6- Driver's App Uninstall

9. Confirm by selecting **Uninstall**.

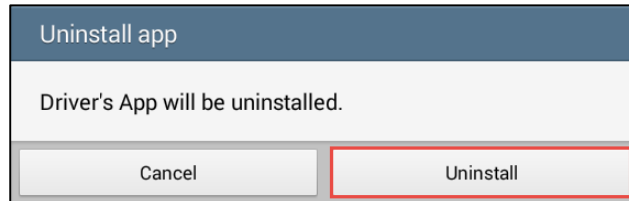


Figure 7- Uninstall app Pop-Up

10. Remove the Micro SD card from the Micro SD Apacer Adapter.



Figure 8- Micro SD Card with Apacer Adapter

11. Insert Micro SD card into the Micro SD slot that is located on the bottom left side of the Samsung Tablet.
12. Once the Tablet detects the Micro SD card, the **SD card** pop-up will display, select **Go to My Files**.

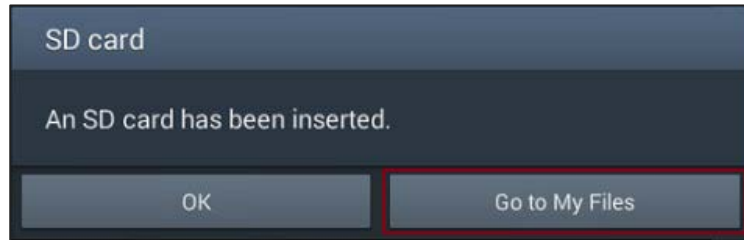


Figure 9- SD Card Pop-Up

13. From **My Files**, select **SD memory card**.

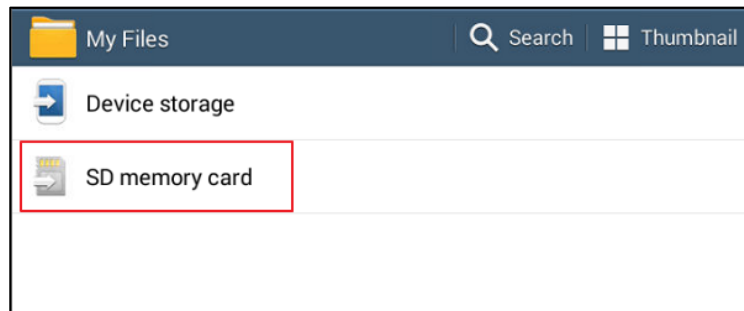


Figure 10- My Files, SD memory card

14. Select the **teletracDriversApp.apk** file.

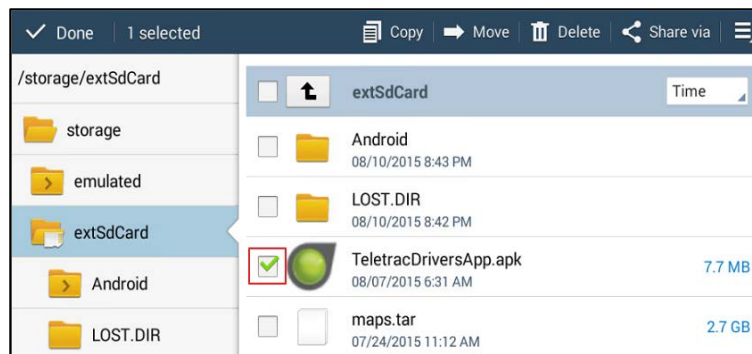



Figure 11- TteletracDriversApp.apk

15. The **Install blocked** pop-up display, select **Settings**.

 This will take you to the Samsung OS Setting menu.

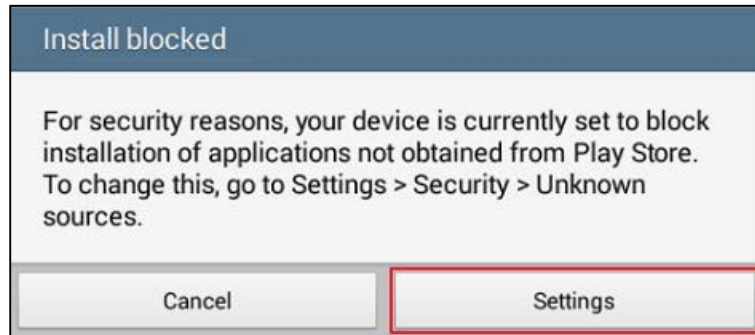


Figure 12- Install blocked Pop-Up

16. Scroll down the right menu until you see **Unknown sources** in the **Device administration** section.

17. Select **Unknown sources**.

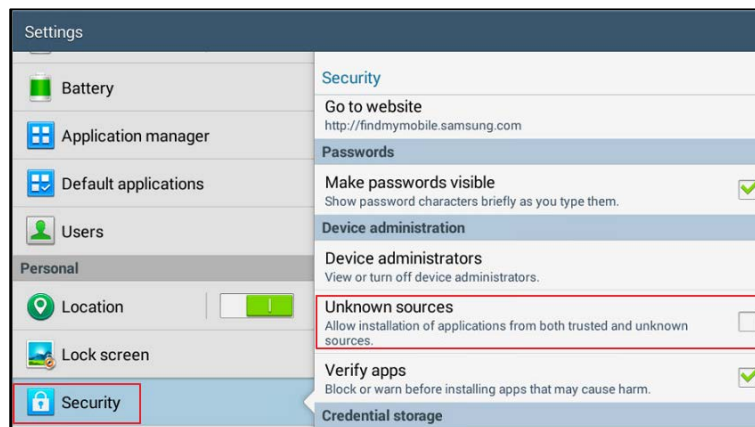


Figure 13- Security, Unknown sources

18. The **Unknown sources** pop-up will display, select **OK**.

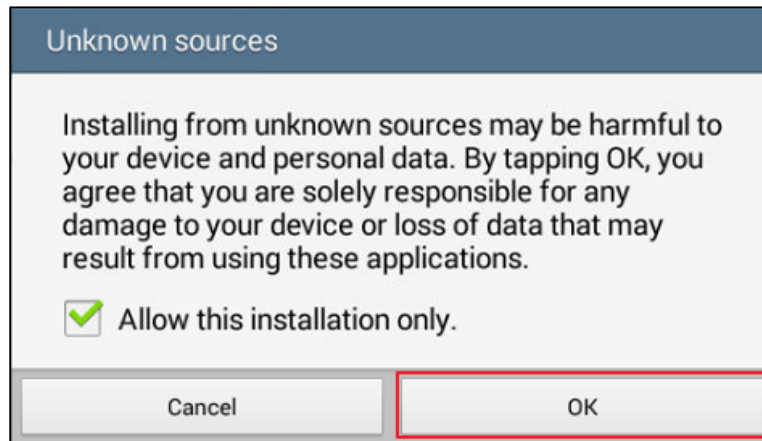


Figure 14- Unknown sources Pop-Up

 Leave **Allow this installation only** button checked.

19. The **Driver's App** pop-up will display, click **Next** to go through the **Privacy** and **Device access information**.

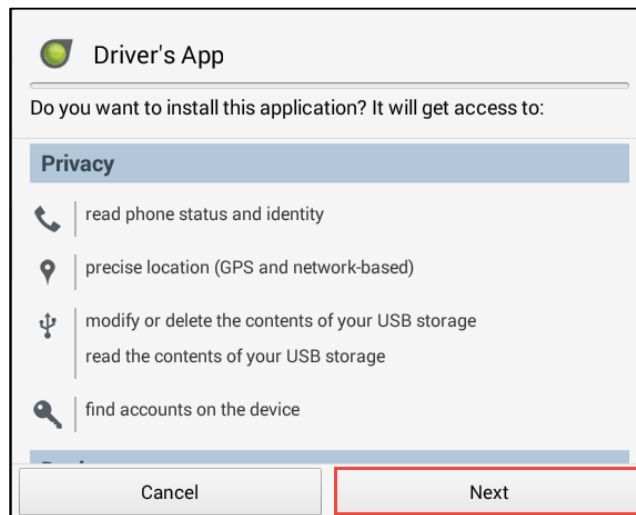


Figure 15- Driver's App Notification



20. Select **Install**.

💡 The application will install in approximately 30 seconds.

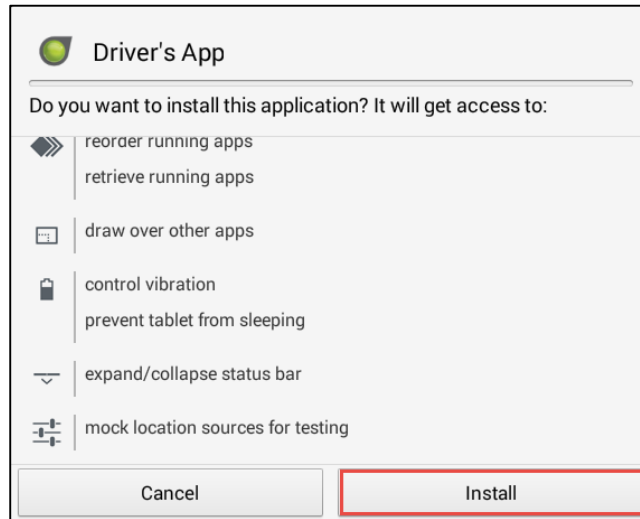


Figure 16- Driver's App Install Button

21. The **Driver's App** pop-up displays, select **Done**.

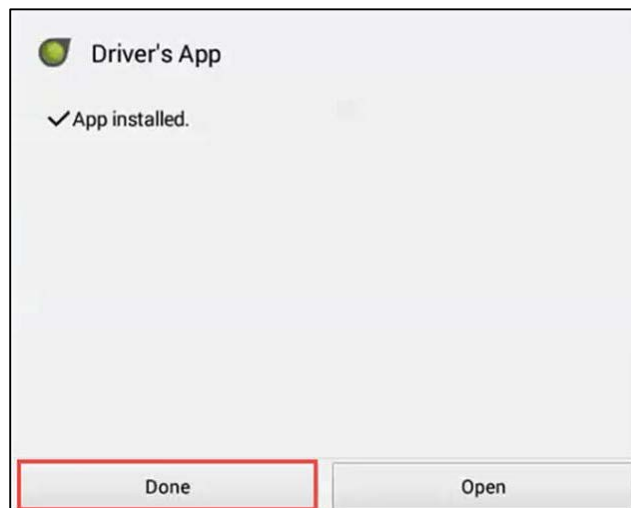


Figure 17- Driver's App, Open Pop-Up

22. To restart the Samsung device press and hold the power button on the upper right side of the tablet, the **Device options** pop-up displays, select **Restart**.

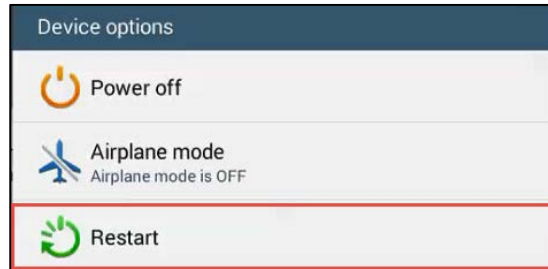


Figure 18- Device options pop-up, Restart Button

23. The **Restart** pop-up will appear, select **OK**.

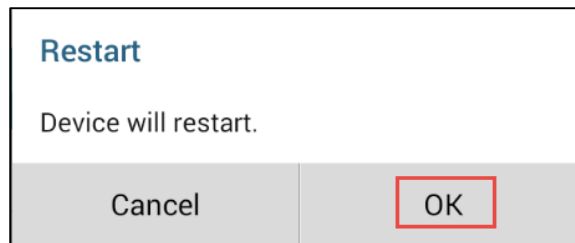


Figure 19- Restart Pop-Up

24. Swipe the screen to unlock the tablet  
25. Then Select the **Driver's App** then select **Always**.



Figure 20- Home Default Pop-up, Driver's App

26. The **Clear defaults** pop-up appears, click **OK**.

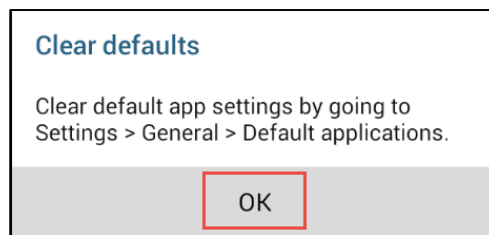


Figure 21- Clear Defaults Pop-up

The Drivers Application will begin loading.

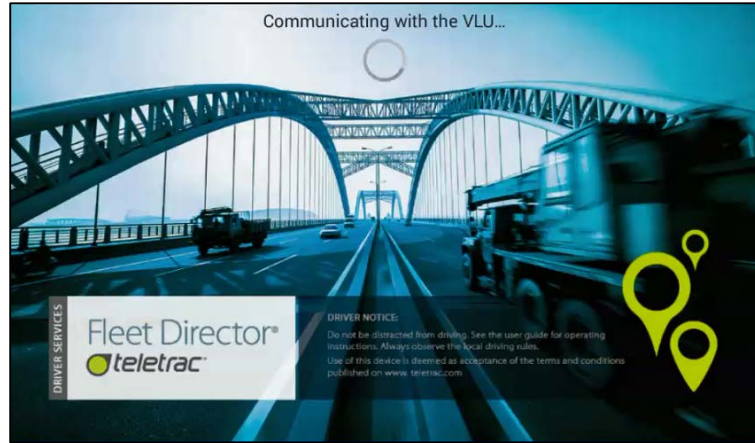


Figure 22- Driver's Application Splash Screen

# Android™ Driver's App Map Update

Once the application has been installed, the map needs to be updated. Depending on whether or not the tablet is paired to the Bluetooth device, you will use one of the following methods to update the map:

- 💡 Proceed to the appropriate section based on one of the possible screens you see below.
- Updating Maps via Disconnect Screen (Tablet not Paired).

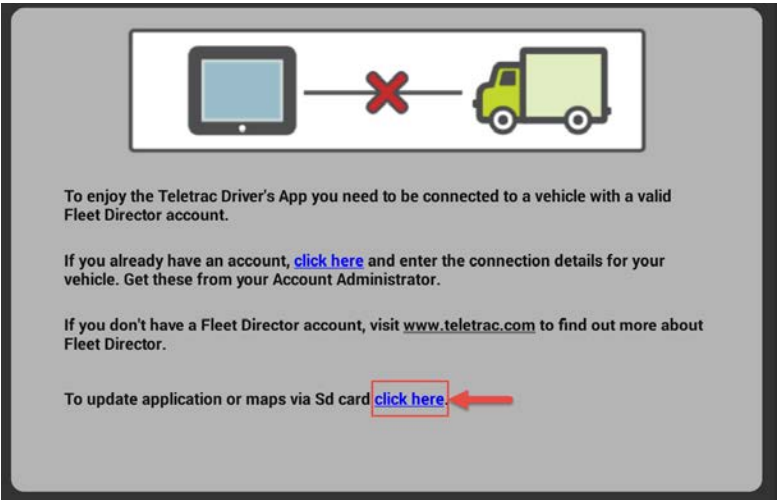


Figure 23- Disconnect Screen

- Updating Maps via Driver's App (Tablet Paired).

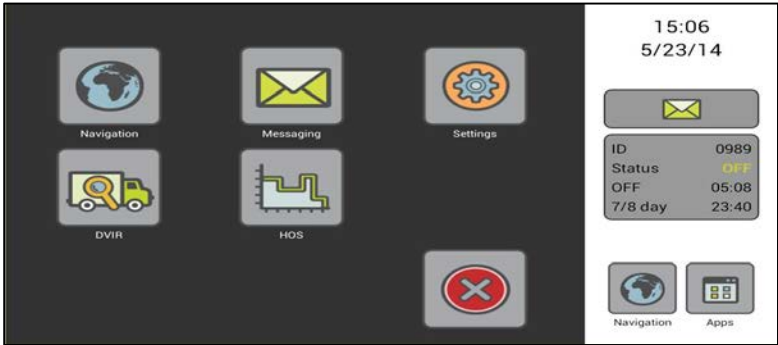


Figure 24- Driver's App Main Screen

## Updating Maps via Disconnect Screen (Tablet not Paired)

Use the following instructions if you are not paired to the Bluetooth device.

1. Select the **click here** hyperlink found in the last sentence as displayed in the image below.

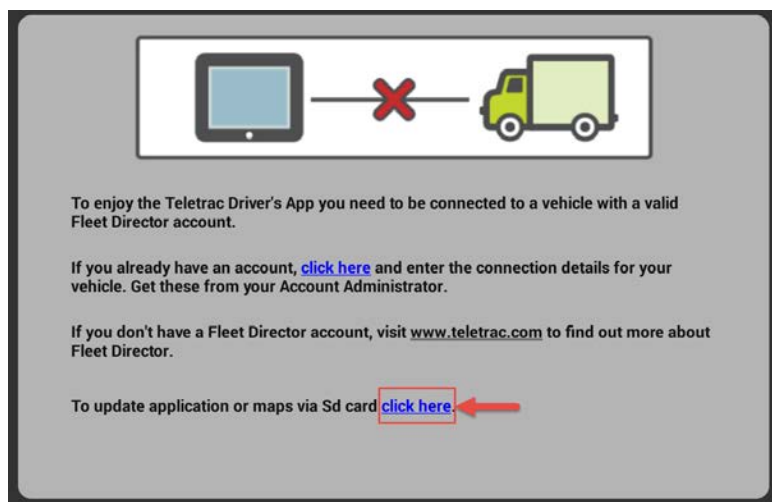


Figure 25- Click here hyperlink

2. The **Update via SD card...** pop-up appears, click **Update Maps**.

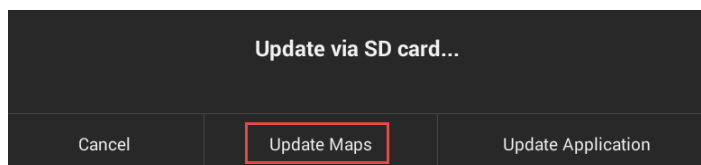



Figure 26- Update via SD Card Button

3. The **Extracting map file** pop-up displays, this will take approximately 5-10 minutes to extract.  
 Please do not remove SD card or press system button (power, back, home, or menu) until Extracting map files is complete.

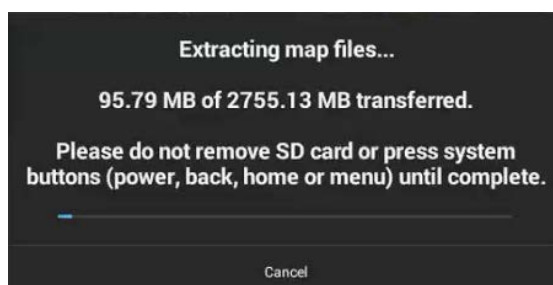


Figure 27- Extracting Map Files Pop-Up

4. Once update is complete, the **File Transfer Complete** pop-up displays, select **Ok**.

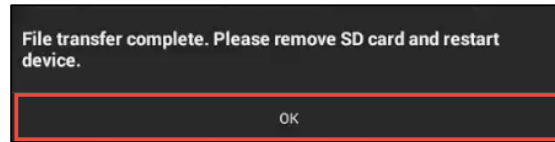


Figure 28- File Transfer Complete Pop-Up

5. Remove the SD card.
6. Select the Back button on the device to enter the **Teletrac Driver's App**.



Figure 29- Device's Back Button

## Updating Maps via Driver's App (Tablet Paired)

Use the following instructions if you are paired to the Bluetooth device.

1. Once loading is complete, select **Apps**.



Figure 30- Apps Icon

2. Select **Settings**.



Figure 31- Settings Icon

3. Select **Administrator**.



Figure 32- Administration Icon

4. A pop-up notification "Please Enter Admin Password" will be received, enter password, **teletrac7391**.
5. Select **Ok**

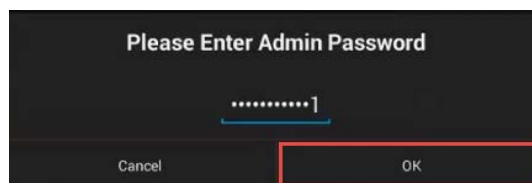


Figure 33- Enter Admin Password Pop-Up

6. Select **Update Maps**.



Figure 34- Update Maps Icon

7. A pop-up notification "Maps may be updated in two ways" will be received, select **Update via SD Card**.

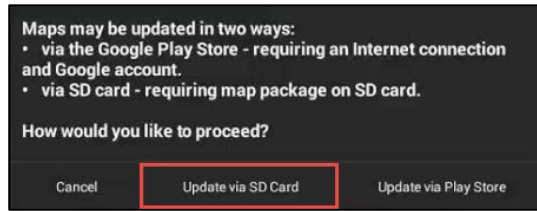


Figure 35- Update via SD Card Button

8. A pop-up notification "Extracting map file" will be received, this will take approximately 5-10 minutes to extract.  
💡 Please do not remove SD card or press system button (power, back, home, or menu) until complete.

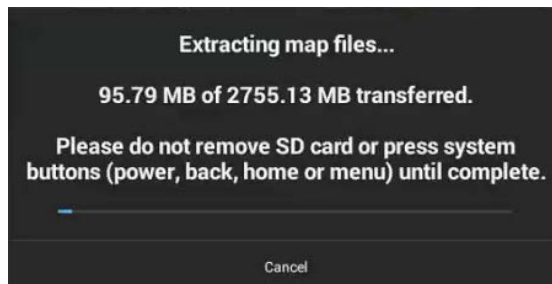


Figure 36- Extracting Map Files

9. Once update is complete, a pop-up notification "File Transfer Complete" will be received, select **Ok**.

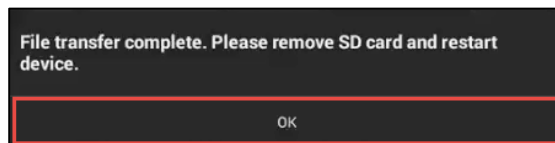


Figure 37- File Transfer Complete Pop-Up

10. Remove the SD card.
11. Select the Back button on the device to enter the **Teletrac Driver's App**.



Figure 38- Device's Back Button





**Teletrac<sup>®</sup> Customer Support**  
**1-800-TELETRAC**