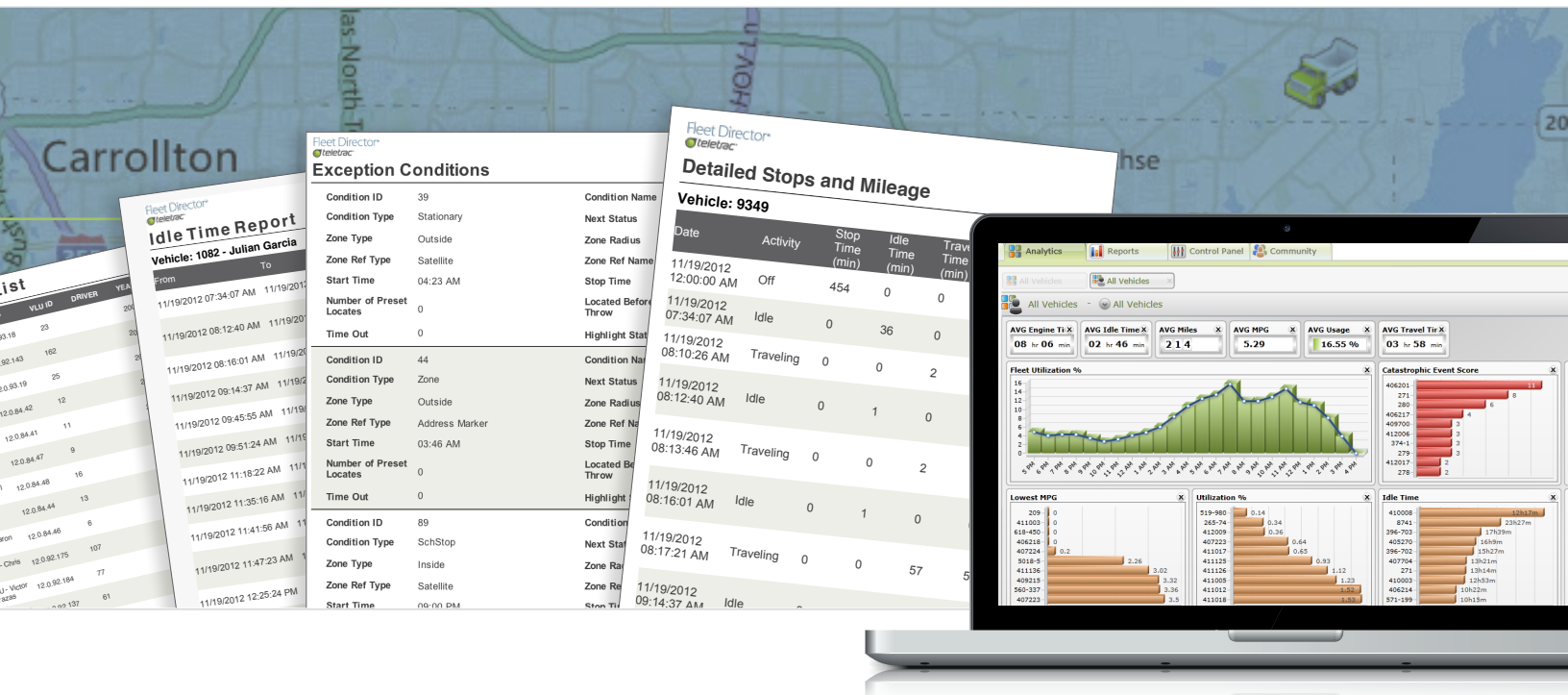


# Standard Edition Reports Overview



Monitoring  
Fuel Management  
Timecard and Overtime Management  
Job and Customer Management

Dispute Resolution  
Safety and Security  
Vehicle/Asset Management

A report overview and index of reports.

fleet Director  
 @inspec

## Idle Time Report

Vehicle: 1082 - Julian Garcia

11/19/2012

11/19/2012

From	To	Duration Minutes	Location
11/19/2012 07:34:07 AM	11/19/2012 08:10:26 AM	36	Closest Landmark Terminal K3 EXIT 5A BOISE, ID 83705 USA
11/19/2012 08:16:01 AM	11/19/2012 08:16:21 AM	18	Closest Landmark Terminal E Plazo TX 4022 S TRANSPORT ST HARTSTROM ST BOISE, ID 83705 USA
11/19/2012 08:16:01 AM	11/19/2012 08:17:21 AM	12	Closest Landmark Terminal K3 4108 S BROADWAY AVE/FA BOISE, ID 83705 USA
11/19/2012 09:14:37 AM	11/19/2012 09:16:10 AM	2	Closest Landmark Belleville IL NE EAST LINE DAWD AVE ONTARIO, OR 97174 USA
11/19/2012 09:45:55 AM	11/19/2012 09:47:13 AM	8	Closest Landmark Terminal K3 NE EAST LINE DAWD AVE ONTARIO, OR 97174 USA
11/19/2012 09:51:24 AM	11/19/2012 09:52:29 AM	7	Closest Landmark Terminal E Plazo TX 588 NE 2ND AVENUE 4TH ST ONTARIO, OR 97174 USA
11/19/2012 11:18:22 AM	11/19/2012 11:20:21 AM	2	Closest Landmark Terminal K3 698 NE 2ND AVENUE 4TH ST ONTARIO, OR 97174 USA
11/19/2012 11:35:16 AM	11/19/2012 11:36:18 AM	11	Closest Landmark Terminal K3 698 NE 2ND AVENUE 4TH ST ONTARIO, OR 97174 USA
11/19/2012 11:41:56 AM	11/19/2012 11:45:03 AM	3	Closest Landmark Terminal E Plazo TX 588 NE 2ND AVENUE 4TH ST ONTARIO, OR 97174 USA
11/19/2012 11:47:23 PM	11/19/2012 11:56:33 AM	9	Closest Landmark Terminal K3 HARTSTROM HWY/US-30-81 ONTARIO, OR 97174 USA
11/19/2012 12:25:24 PM	11/19/2012 12:27:41 PM	2	Closest Landmark Terminal K3 HARTSTROM HWY/US-30 WALE, OR 97174 USA
11/19/2012 12:43:38 PM	11/19/2012 12:51:34 PM	8	Closest Landmark Terminal E Plazo TX 5812 HARTSTROM HWY/US-30 WALE, OR 97174 USA
11/19/2012 04:12:38 PM	11/19/2012 04:14:08 PM	1	Closest Landmark Terminal K3 1-820131 KENNEWICK, WA 98038 USA
11/19/2012 04:35:57 PM	11/19/2012 04:36:36 PM	1	Closest Landmark Terminal E Plazo TX US-356/51 27TH AVE KENNEWICK, WA 98037 USA
11/19/2012 04:40:39 PM	11/19/2012 04:41:49 PM	1	Closest Landmark Terminal K3 278 N ELY ST/US-306 KENNEWICK, WA 98038 USA
11/19/2012 04:53:43 PM	11/19/2012 04:57:09 PM	3	Closest Landmark Terminal E Plazo TX 3829 N COMMERCIAL AVEE HILLSBORO ST PASCO, WA 99031 USA
11/19/2012 06:09:15 PM	11/19/2012 06:13:47 PM	5	Closest Landmark Terminal K3 3827 N COMMERCIAL AVEE HILLSBORO ST PASCO, WA 99031 USA

1 / 2

11/26/2012

1 / 1

11/27/2012

- Detailed Stops and Mileage Report
- Idle Time Report
- Exception Report
- On-Site by Vehicle Report
- Duration Report
- Speeding Report
- Stationary Time Report
- Vehicle Service Report
- Detailed Report
- Message Report
- On-Site Detailed Report
- Exception Conditions Report
- Landmark List Report
- Vehicle List Report
- Subfleet List Report
- Vehicle Mileage By State Report



# Reports by Activity Goal

## Goals

**Monitoring:** Know what's going on in the field and get a bird's-eye view of the fleet

Reports	How Report Addresses Goal
Detailed Stops and Mileage Report	Gives detail of all stops and distance traveled as well as idle time and travel time between stops with a summary of the stop/idle/travel percentages for any given day.
Exception Report	Gives a report history of exceptions by selected date.
Idle Time Report	Gives an in-depth view of all idle time by location.
Speeding Report	Gives detailed incidents of speeding within a selected date range.
Stationary Time Report	Gives an overview of duration and locations where the vehicle is stationary.
Duration Report	Gives a detail list of durations by status.
Vehicle Mileage By State	Gives miles traveled per state, per vehicle, for a selected date range.

**Fuel Management:** Drive down fuel use and eliminate avoidable idle time

Reports	How Report Addresses Goal
Exception Report	Gives a report history of exceptions by selected date.
Idle Time Report	Gives an in-depth view of all idle time by location.
Speeding Report	Gives detailed incidents of speeding within a selected date range.
Vehicle Service Report	Gives detail about maintenance and service specifics by vehicle.

**Job and Customer Management:** Increase the number of jobs, track customer visits and monitor on-time delivery

Reports	How Report Addresses Goal
On-Site by Vehicle Report	Gives detail by vehicle of time spent at both user-defined sites and addresses for a selected date range.
Detailed Stops and Mileage Report	Gives detail of all stops and distance traveled as well as idle time and travel time between stops with a summary of the stop/idle/travel percentages for any given day.

**Dispute Resolution:** Get detail to manage internal and external disputes

Reports	How Report Addresses Goal
Detailed Report	Gives a detailed list of each event that the vehicle reports, including location points and messages.
Message Report	Gives all messages sent to and from specific vehicles in the field.
On-Site Detailed Report	Gives an overview of status changes and messages detailed by user-defined sites.

**Safety and Security Management:** Promote safe behaviors and eliminate loss prevention

Reports	How Report Addresses Goal
Exception Report	Gives a report history of exceptions by selected date.
Speeding Report	Gives detailed incidents of speeding within a selected date range.
Vehicle Service Report	Gives detail around maintenance and service specifics by vehicle.

**Vehicle/Asset Management:** Manage vehicle uptime and asset/settings lists

Reports	How Report Addresses Goal
Exception Report	Gives a report history of exceptions by selected date.
Stationary Time Report	Gives an overview of duration and locations where the vehicle is stationary.
Exception Conditions Report	Gives a list of exception conditions which trigger alerts.
Landmark List Report	Gives a list of all defined landmarks.
Vehicle List Report	Gives a list of all vehicles or assets with detail such as make/model/year, VIN and custom comments.
Subfleet List Report	Gives a list of all user-defined subgroups with the corresponding assets and vehicles.



## Reports Detailed

Exception Conditions		Exception Conditions	
Condition 1	Condition 2	Condition 1	Condition 2
Condition 3	Condition 4	Condition 3	Condition 4
Condition 5	Condition 6	Condition 5	Condition 6
Condition 7	Condition 8	Condition 7	Condition 8
Condition 9	Condition 10	Condition 9	Condition 10
Condition 11	Condition 12	Condition 11	Condition 12
Condition 13	Condition 14	Condition 13	Condition 14
Condition 15	Condition 16	Condition 15	Condition 16
Condition 17	Condition 18	Condition 17	Condition 18
Condition 19	Condition 20	Condition 19	Condition 20
Condition 21	Condition 22	Condition 21	Condition 22
Condition 23	Condition 24	Condition 23	Condition 24
Condition 25	Condition 26	Condition 25	Condition 26
Condition 27	Condition 28	Condition 27	Condition 28
Condition 29	Condition 30	Condition 29	Condition 30
Condition 31	Condition 32	Condition 31	Condition 32
Condition 33	Condition 34	Condition 33	Condition 34
Condition 35	Condition 36	Condition 35	Condition 36
Condition 37	Condition 38	Condition 37	Condition 38
Condition 39	Condition 40	Condition 39	Condition 40
Condition 41	Condition 42	Condition 41	Condition 42
Condition 43	Condition 44	Condition 43	Condition 44
Condition 45	Condition 46	Condition 45	Condition 46
Condition 47	Condition 48	Condition 47	Condition 48
Condition 49	Condition 50	Condition 49	Condition 50
Condition 51	Condition 52	Condition 51	Condition 52
Condition 53	Condition 54	Condition 53	Condition 54
Condition 55	Condition 56	Condition 55	Condition 56
Condition 57	Condition 58	Condition 57	Condition 58
Condition 59	Condition 60	Condition 59	Condition 60
Condition 61	Condition 62	Condition 61	Condition 62
Condition 63	Condition 64	Condition 63	Condition 64
Condition 65	Condition 66	Condition 65	Condition 66
Condition 67	Condition 68	Condition 67	Condition 68
Condition 69	Condition 70	Condition 69	Condition 70
Condition 71	Condition 72	Condition 71	Condition 72
Condition 73	Condition 74	Condition 73	Condition 74
Condition 75	Condition 76	Condition 75	Condition 76
Condition 77	Condition 78	Condition 77	Condition 78
Condition 79	Condition 80	Condition 79	Condition 80
Condition 81	Condition 82	Condition 81	Condition 82
Condition 83	Condition 84	Condition 83	Condition 84
Condition 85	Condition 86	Condition 85	Condition 86
Condition 87	Condition 88	Condition 87	Condition 88
Condition 89	Condition 90	Condition 89	Condition 90
Condition 91	Condition 92	Condition 91	Condition 92
Condition 93	Condition 94	Condition 93	Condition 94
Condition 95	Condition 96	Condition 95	Condition 96
Condition 97	Condition 98	Condition 97	Condition 98
Condition 99	Condition 100	Condition 99	Condition 100
Condition 101	Condition 102	Condition 101	Condition 102
Condition 103	Condition 104	Condition 103	Condition 104
Condition 105	Condition 106	Condition 105	Condition 106
Condition 107	Condition 108	Condition 107	Condition 108
Condition 109	Condition 110	Condition 109	Condition 110
Condition 111	Condition 112	Condition 111	Condition 112
Condition 113	Condition 114	Condition 113	Condition 114
Condition 115	Condition 116	Condition 115	Condition 116
Condition 117	Condition 118	Condition 117	Condition 118
Condition 119	Condition 120	Condition 119	Condition 120
Condition 121	Condition 122	Condition 121	Condition 122
Condition 123	Condition 124	Condition 123	Condition 124
Condition 125	Condition 126	Condition 125	Condition 126
Condition 127	Condition 128	Condition 127	Condition 128
Condition 129	Condition 130	Condition 129	Condition 130
Condition 131	Condition 132	Condition 131	Condition 132
Condition 133	Condition 134	Condition 133	Condition 134
Condition 135	Condition 136	Condition 135	Condition 136
Condition 137	Condition 138	Condition 137	Condition 138
Condition 139	Condition 140	Condition 139	Condition 140
Condition 141	Condition 142	Condition 141	Condition 142
Condition 143	Condition 144	Condition 143	Condition 144
Condition 145	Condition 146	Condition 145	Condition 146
Condition 147	Condition 148	Condition 147	Condition 148
Condition 149	Condition 150	Condition 149	Condition 150
Condition 151	Condition 152	Condition 151	Condition 152
Condition 153	Condition 154	Condition 153	Condition 154
Condition 155	Condition 156	Condition 155	Condition 156
Condition 157	Condition 158	Condition 157	Condition 158
Condition 159	Condition 160	Condition 159	Condition 160
Condition 161	Condition 162	Condition 161	Condition 162
Condition 163	Condition 164	Condition 163	Condition 164
Condition 165	Condition 166	Condition 165	Condition 166
Condition 167	Condition 168	Condition 167	Condition 168
Condition 169	Condition 170	Condition 169	Condition 170
Condition 171	Condition 172	Condition 171	Condition 172
Condition 173	Condition 174	Condition 173	Condition 174
Condition 175	Condition 176	Condition 175	Condition 176
Condition 177	Condition 178	Condition 177	Condition 178
Condition 179	Condition 180	Condition 179	Condition 180
Condition 181	Condition 182	Condition 181	Condition 182
Condition 183	Condition 184	Condition 183	Condition 184
Condition 185	Condition 186	Condition 185	Condition 186
Condition 187	Condition 188	Condition 187	Condition 188
Condition 189	Condition 190	Condition 189	Condition 190
Condition 191	Condition 192	Condition 191	Condition 192
Condition 193	Condition 194	Condition 193	Condition 194
Condition 195	Condition 196	Condition 195	Condition 196
Condition 197	Condition 198	Condition 197	Condition 198
Condition 199	Condition 200	Condition 199	Condition 200
Condition 201	Condition 202	Condition 201	Condition 202
Condition 203	Condition 204	Condition 203	Condition 204
Condition 205	Condition 206	Condition 205	Condition 206
Condition 207	Condition 208	Condition 207	Condition 208
Condition 209	Condition 210	Condition 209	Condition 210



# Detailed Stops and Mileage Report

Gives detail of all stops, distances traveled, idle time and travel time.  
See a daily summary view for all vehicles.

## Goals

Monitoring  
Job and Customer  
Management

## Highlights

- Provides a log of a vehicle's stop, idle and travel activity in chronological order and the context of location.

## Advantages

- Beneficial for seeing the detail where excessive idle time or stop time is happening by location for a clear training intervention.

*In this actual client report, see stop-idle-travel minutes between locations with a % summary for the day at the bottom of the report.*

Fleet Director<sup>®</sup>  
teletrac

### Detailed Stops and Mileage

11/19/2012

11/19/2012

Vehicle: 9349

Date	Activity	Stop Time (min)	Idle Time (min)	Travel Time (min)	Distance	Location
11/19/2012 12:00:00 AM	Off	454	0	0	0.00	Closest Landmark:Terminal El Paso TX EXIT 54 BOISE, ID 83705 USA
		0	36	0	0.00	Closest Landmark:Terminal K3 EXIT 54 BOISE, ID 83705 USA
11/19/2012 08:10:26 AM	Traveling	0	0	2	0.00	Closest Landmark:Terminal K3 EXIT 54 BOISE, ID 83705 USA
11/19/2012 08:12:40 AM	Idle	0	1	0	0.00	Closest Landmark:Terminal El Paso TX 4022 S TRANSPORT ST/TRANSPORT ST BOISE, ID 83705 USA
11/19/2012 08:13:46 AM	Traveling	0	0	2	0.20	Closest Landmark:Terminal K3 1528 W COMMERCE AVE/COMMERCE AVE BOISE, ID 83705 USA
11/19/2012 08:16:01 AM	Idle	0	1	0	0.00	Closest Landmark:Terminal K3 4108 S BROADWAY AVE/54 BOISE, ID 83705 USA
11/19/2012 08:17:21 AM	Traveling	0	0	57	55.30	Closest Landmark:Terminal K3 S BROADWAY AVE/US-20 BOISE, ID

Totals for 9349:	784	306	331	292	# Stops:28
% of Time in Status:	55%	22%	23%		

### All Vehicles

	Stop Time	Idle Time	Travel Time	Distance	Stops
Grand Totals:	784	306	331	292	28
	55%	22%	23%		

IDLE TIME

MILES

Trend

To: 7/18/2015





# Idle Time Report

Gives detail of all idle time by location.

## Goals

Monitoring  
Fuel Mangement

## Highlights

- Provides to and from times between locations.
- Lists idle time in minutes.

## Advantages

- Beneficial to see idle time isolated.

*In this actual  
client report, see  
idle minutes  
between locations.*

Fleet Director®  
teletac™

## Idle Time Report

11/19/2012

11/19/2012

Vehicle: 1082 - Julian Garcia

From	To	Duration Minutes	Location
11/19/2012 07:34:07 AM	11/19/2012 08:10:26 AM	36	Closest Landmark:Terminal K3 EXIT 54 BOISE, ID 83705 USA
11/19/2012 08:12:40 AM	11/19/2012 08:13:46 AM	18	Closest Landmark:Terminal El Paso TX 4022 S TRANSPORT ST/TRANSPORT ST BOISE, ID 83705 USA
11/19/2012 08:16:01 AM	11/19/2012 08:17:21 AM	12	Closest Landmark:Terminal K3 4108 S BROADWAY AVE/54 BOISE, ID 83705 USA
11/19/2012 09:14:37 AM	11/19/2012 09:16:10 AM	2	Closest Landmark:Belvidere IL NE EAST LN/E IDAHO AVE ONTARIO, OR 97914 USA
11/19/2012 09:45:55 AM	11/19/2012 09:47:13 AM	6	Closest Landmark:Terminal K3 NE EAST LN/E IDAHO AVE ONTARIO, OR 97914 USA
11/19/2012 09:51:24 AM	11/19/2012 09:52:29 AM	7	Closest Landmark:Terminal El Paso TX 998 NE 2ND AVE/NE 4TH ST ONTARIO, OR 97914 USA
11/19/2012 11:18:22 AM	11/19/2012 11:20:21 AM	2	Closest Landmark:Terminal K3 998 NE 2ND AVE/NE 4TH ST ONTARIO, OR 97914 USA
11/19/2012 11:35:16 AM	11/19/2012 11:36:18 AM	11	Closest Landmark:Terminal K3 998 NE 2ND AVE/NE 4TH ST ONTARIO, OR 97914 USA

From	To	Duration Minutes	Location
11/19/2012 06:55:56 PM	11/19/2012 07:06:32 PM	11	Closest Landmark:Terminal El Paso TX 3825 N COMMERCIAL AVE/E HILLSBORO ST PASCO, WA 99301 USA
11/19/2012 08:15:23 PM	11/19/2012 11:59:00 PM	224	Closest Landmark:Terminal K3 3823 N COMMERCIAL AVE/E HILLSBORO ST PASCO, WA 99301 USA
Total for 1082 - Julian Garcia:		314	





# Exception Report

Gives a report history of exceptions by selected date.

## Goals

Monitoring  
Fuel Management  
Safety and Security  
Management  
Vehicle/Asset  
Management

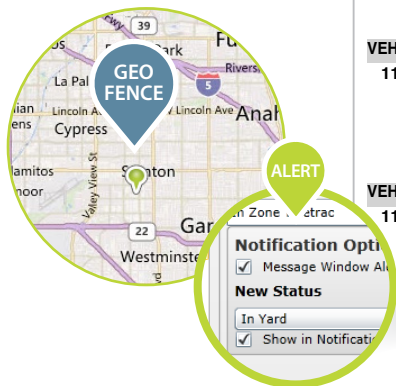
## Highlights

- Includes detail for pre-defined and customized exceptions.
- Notifications are displayed under exceptions in the Fleet Director software interface.

## Advantages

- Beneficial for seeing notifications for a given time period and managing exceptions defined by the business.

*In this actual client report, see exceptions triggered for vehicles moving inside an important landmark perimeter (geo-fence).*



### Exception

For 11/7/2012 12:00:00 AM through 11/8/2012 11:59:59 PM

	Status	Exception
<b>VEHICLE NAME: 278 - Marlin Miles</b>		
<b>11/8/2012</b>		
6:08:51 AM	ON	Inside belv
7:28:50 AM	OF	Inside belv
8:28:50 AM	ON	Inside belv
9:57:23 AM	ON	Inside belv
10:18:25 AM	ON	Inside belv
<b>VEHICLE NAME: 447 - Danny Dukes</b>		
<b>11/8/2012</b>		
6:32:09 AM	ON	Inside holland
<b>VEHICLE NAME: 539 - Vern Cadwallader</b>		
<b>11/7/2012</b>		
3:10:36 AM	ON	Inside belv
4:17:20 AM	ON	Inside belv
4:51:53 AM	ON	Inside belv
5:10:23 AM	ON	Inside belv
<b>VEHICLE NAME: 547 - Runder Smith</b>		
<b>11/7/2012</b>		
11:32:28 AM	ON	Inside belv
11:37:09 AM	ON	Inside belv
<b>VEHICLE NAME: 563 - Kyle Hovey</b>		
<b>11/8/2012</b>		
6:55:18 AM	ON	Inside belv



# On-Site by Vehicle Report

Gives detail by vehicle of time spent at both user-defined landmarks and addresses for a selected date range.

## Goals

Job and Customer Management

## Highlights

- Provides a summary of time landmarks at sites of interest, such as customer locations.
- Report includes customizable filters to highlight excessive time a vehicle spent at a location.

## Advantages

- Beneficial for easily seeing where vehicles are spending excessive time to manage and train for increased productivity.

*In this actual client report, see highlighted time on-site concerns based on time thresholds set by the user.*



### On-Site by Vehicle

For 11/7/2012 12:00:00 AM through 11/8/2012 11:59:59 PM

VEHICLE NAME: 278 - Marlin Miles

		Elapsed Time
11/7/2012	Terminal K3	11:41
11/8/2012	Belvidere IL	04:24
11/8/2012	Terminal K3	00:21

Number of On Site visits: 3

Elapsed Time: 16:26

Other Stops:

Date	Street	Elapsed Time
11/7/2012	8362 N 4000E RD @ SERVICE RD MANTENO, IL 60950	00:05
11/7/2012	1543 N BOUDREAU RD BETWEEN E REDWOOD AVE AND N GROVE ST MANTENO, IL 60950	00:12
11/7/2012	GERALD R FORD FWY/I-196 CASCO TWP, MI 49090	00:09
11/7/2012	4498 CENTURY CENTER ST SW @ RIVERTOWN CIR SW GRANDVILLE, MI 49418	00:36
11/7/2012	289 LAFAYETTE ST BETWEEN GRAND RAPIDS ST AND CIDER MILL DR MIDDLEVILLE, MI 49333	00:07
11/7/2012	498 EAGLE DR @ GRAND RAPIDS ST MIDDLEVILLE, MI 49333	00:06
11/7/2012	900 GRAND RAPIDS ST @ CIDER MILL DR MIDDLEVILLE, MI 49333	00:07
11/7/2012	289 LAFAYETTE ST @ GRAND RAPIDS ST MIDDLEVILLE, MI 49333	00:06
11/8/2012	E 8TH RD/CR-43 NORTH UTICA, IL 61373	00:16
11/8/2012	922 W 21ST ST BETWEEN S PEORIA ST AND W 21ST ST CHICAGO, IL 60608	01:27

VEHICLE NAME: 438 - Daniel Gutierrez







# Duration Report

Gives a detail list of durations by status.

## Goals

Monitoring

## Highlights

- Standard statuses include time between ignition on/off, time traveling, etc.
- Report expands for other status choices with optional features like enhanced timecarding.

## Advantages

- Beneficial as a basic timecard report.

*In this actual client report, see durations by status broken down in detail throughout the day for this vehicle.*



### Duration

For 11/19/2012 12:00 AM through 11/19/2012 11:59 PM (Central Time)

Start Status= ON and End Status= OF

Start Time	End Time	Duration	Location
------------	----------	----------	----------

VEHICLE NAME: AG3595

11/19/2012

5:04:01 AM	5:24:49 AM	00:20:48	S	Closest Landmark: ANW CHARLOTTE
5:24:49 AM			E	5255 OLD DOWD RD & BOYER ST CHARLOTTE NC 28208
5:26:35 AM	5:47:38 AM	00:21:03	S	5243 OLD DOWD RD & BOYER ST CHARLOTTE NC 28208
5:47:38 AM			E	I-77 & 90 FORT MILL SC 29715
5:57:46 AM	6:10:50 AM	00:13:04	S	I-77 & 90 FORT MILL SC 29715
6:10:50 AM			E	Closest Landmark: AMG
7:23:19 AM	7:43:32 AM	00:20:13	S	Closest Landmark: AMG
7:43:32 AM			E	MT HOLLY RD/SC-901 ROCK HILL SC 29730
7:59:13 AM	8:20:42 AM	00:21:29	S	MT HOLLY RD/SC-901 ROCK HILL SC 29730
8:20:42 AM			E	BELTLINE RD & ECOLOGY RD CHESTER SC 29706
8:30:54 AM	9:09:06 AM	00:38:12	S	BELTLINE RD & ECOLOGY RD CHESTER SC 29706
9:09:06 AM			E	3018 LANCASTER HWY/SC-9 RICHBURG SC 29729
9:13:36 AM	12:42:19 PM	03:28:43	S	3018 LANCASTER HWY/SC-9 RICHBURG SC 29729
12:42:19 PM			E	154 W MILL ST & US-52 KINGSTREE SC 29556
12:45:52 PM	4:59:50 PM	04:13:58	S	152 W MILL ST & US-52 KINGSTREE SC 29556
4:59:50 PM			E	293 JAMES L TAYLOR RD/JAMES F TAYLOR DR RIDGELAND SC 29936
5:05:03 PM	5:06:39 PM	00:01:36	S	447 JAMES L TAYLOR RD & BLUE HERON DR RIDGELAND SC 29936
5:06:39 PM			E	409 JAMES L TAYLOR RD & BLUE HERON DR RIDGELAND SC 29936

DURATION



GPS





# Speeding Report

Gives detailed incidents of speeding within a selected date range.

## Goals

Monitoring  
Fuel Management  
Safety and Security  
Management

## Highlights

- Includes time, speed and directional correlation with reporting locations.

## Advantages

- Beneficial for getting detail about speeding incidents for monitoring and addressing through training.

*In this actual client report, see speeding incidents broken down by vehicle.*



### Speeding Report

For 11/12/2012 12:00:00 AM through 11/19/2012 11:59:00 PM

VEHICLE NAME: 318630

Date: 11/12/2012

Time	Message	MPH	Location
2:54:49 PM	Speeding	71mph NW	I-26 & VALLEY RIDGE RD, SWANSEA, SC 29160
	Speeding	72mph N	I-77 & 34, WINNSBORO, SC 29180

VEHICLE NAME: 327475

Date: 11/13/2012

Time	Message	MPH	Location
1:19:01 PM	Speeding	70mph W	I-85 & 94, LEXINGTON, NC 27292

VEHICLE NAME: AY9422

Date: 11/12/2012

Time	Message	MPH	Location
11:19:52 AM	Speeding	71mph W	I-40 & 150, GRAHAM, NC 27258

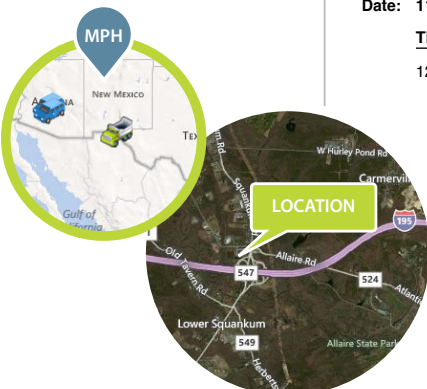
Date: 11/19/2012

Time	Message	MPH	Location
7:55:51 AM	Speeding	73mph SW	I-85 & 94, LEXINGTON, NC 27292

VEHICLE NAME: BB3950

Date: 11/15/2012

Time	Message	MPH	Location
12:56:43 PM	Speeding	73mph E	I-85 & UNIVERSITY RD, HILLSBOROUGH, NC 27278





# Stationary Time Report

Gives an overview of duration and locations where the vehicle is stationary.

## Goals

Monitoring  
Vehicle/Asset  
Management

## Highlights

- Report gives total duration and locations for stationary time by vehicle over a selected time period.

## Advantages

- The report provides the ability to monitor stationary time in order to better manage business practices.

*In this actual client report, see durations of stationary time broken down by vehicle through the selected time period.*

Fleet Director®  
teletrac

## Stationary Time Report

01/02/2013

01/02/2013

Vehicle: BB3929

From	To	Duration Minutes	Location
01/02/2013 06:00:00 AM	01/02/2013 07:25:18 AM	85	Closest Landmark:AMG 581CEL-RIVER RD/EDEN TER ROCK HILL, SC 29730 USA
01/02/2013 08:48:41 AM	01/02/2013 09:31:04 AM	42	Closest Landmark:JP CARLTON 171JOHN DODD RD/BONDALE DR SPARTANBURG, SC 29303 USA
01/02/2013 09:41:49 AM	01/02/2013 10:07:20 AM	26	Closest Landmark:KUSTERS ZIMA CORP 279ZIMA PARK DR/ZIMA PARK RD SPARTANBURG, SC 29301 USA
01/02/2013 10:20:00 AM	01/02/2013 10:55:00 AM	35	Closest Landmark:AMBULATORY SURGERY CENTER 548BEAUMONT AVE/REYNOLDS ST SPARTANBURG, SC 29303 USA
01/02/2013 11:26:46 AM	01/02/2013 11:30:04 AM	3	Closest Landmark:STANDARD AUTOMOTIVE 40 SMITH RD/PELHAM RD GREENVILLE, SC 29615 USA
01/02/2013 11:32:06 AM	01/02/2013 11:56:59 AM	25	Closest Landmark:STANDARD AUTOMOTIVE 40 SMITH RD/PELHAM RD GREENVILLE, SC 29615 USA
01/02/2013 12:47:38 PM	01/02/2013 01:47:32 PM	60	Closest Landmark:DELTA POWER EQUIPMENT CORP 5564AIRPORT RD/EARL WHITE DR ANDERSON, SC 29626 USA
01/02/2013 01:49:57 PM	01/02/2013 01:51:00 PM	1	5572 AIRPORT RD/EARL WHITE DR ANDERSON, SC 29626 USA
01/02/2013 02:04:43 PM	01/02/2013 02:41:17 PM	37	Closest Landmark:UNAFLEX 199SEMINOLE CT/SEMINOLE AVE ANDERSON, SC 29626 USA
01/02/2013 04:05:47 PM	01/02/2013 04:16:24 PM	11	905 SC-S-11-81/HYATT ST/SC-105 GAFFNEY, SC 29341 USA
01/02/2013 05:08:27 PM	01/02/2013 06:59:00 PM	111	Closest Landmark:ANW CHARLOTTE 5443OLD DOWD RD/RC JOSH BIRMINGHAM PKY CHARLOTTE, NC 28208 USA
Total:		435	

TIME

LAND  
MARK

Vector Capital  
1 Market St, San Francisco, CA  
94105-1420 United States



# Vehicle Service Report

Gives detail around maintenance and service specifics by vehicle.

## Goals

Fuel Management  
Safety and Security  
Management

## Highlights

- Report shows when each vehicle is due for service.
- Supports custom service intervals, defined in either miles or hours of operation.
- 9 service types can be individually tracked per vehicle, e.g. oil service, air filter, brakes, engine coolant, tires replace, tires rotate, transmission fluids, transmission service, tune up.

## Advantages

- Beneficial for proactively planning vehicle servicing across the fleet.
- Reduce the risk of mechanical breakdown or invalidation of vehicle warranty by following service schedules.
- Flag vehicles which are overdue for servicing.

Fleet Director®  
teletac™

## Vehicle Service Report

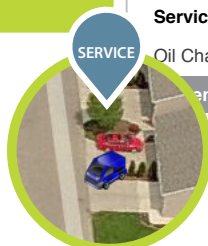
Vehicle: BT 06		Last Service			Next Service	
Service Type	Date	Miles	Cost	Engine Hours	Days To	Miles To
Air Filter	10/24/2012	75,188	\$19	39		
Engine Service	10/24/2012	75,188	\$149	139		2931.33
Oil Change	10/24/2012	75,188	\$29	139		2931.33
Current Miles: 75256.67						

Vehicle: BT 15		Last Service			Next Service	
Service Type	Date	Miles	Cost	Engine Hours	Days To	Miles To
Air Filter	10/16/2012	88,823	\$19	87		
Engine Service	10/16/2012	88,823	\$149	187		2526.28
Oil Change	10/16/2012	88,823	\$29	187		2526.28
Current Miles: 89296.72						

Vehicle: BT 30		Last Service			Next Service	
Service Type	Date	Miles	Cost	Engine Hours	Days To	Miles To
Oil Change	04/19/2012	36,339	\$30	Over Due	Over Due	Over Due
Current Miles: 37184.51						

Vehicle: BT 46		Last Service			Next Service	
Service Type	Date	Miles	Cost	Engine Hours	Days To	Miles To
Oil Change	01/01/2012	54,179	\$30	Over Due	Over Due	Over Due
Current Miles: 58444.12						

In this actual client report, see vehicles which are overdue for oil service. Failure to adhere to service schedules can lead to premature wear and invalidate vehicle warranty.





# Detailed Report

Gives a detailed view of transmitted data.

## Goals

Dispute Resolution

## Highlights

- Gives detailed location logs with speed and addresses/landmarks.
- Additional detail around event triggers such as ignition on, messages received, speeding events and exception events.

## Advantages

- Beneficial for proving driver disputes on location and speeding incidents or customer disputes about job site deliveries.

*In this actual client report, view speed and locations as well as triggered events such as ignition-on and off and breaking the speed threshold.*



### Detailed

For 11/8/2012 12:00 AM through 11/8/2012 11:59 PM (Eastern Time)

Event Type	Status	Heading	Location / Message
------------	--------	---------	--------------------

VEHICLE NAME: Joe G.

11/8/2012

			Speeding	
3:04:45 PM	LOC	ON	78mph S	SR-93/I-75 MIRAMAR FL 33027
3:05:53 PM	INB	ON	80mph S	SR-93/I-75 HIALEAH FL 33018
			Speeding	
			80mph S	SR-93/I-75 HIALEAH FL 33018
			Speeding	
3:09:46 PM	LOC	ON	52mph N	PALMETTO EXPY/SR-826 MIAMI LAKES FL 33014
3:14:47 PM	LOC	ON	70mph E	PALMETTO EXPY/SR-826 MIAMI GARDENS FL 33054
3:19:48 PM	LOC	ON	79mph S	I-95 & NW 119TH ST MIAMI FL 33168
3:22:53 PM	LOC	ON	79mph S	I-95 & NW 54TH ST MIAMI FL 33127
3:24:49 PM	LOC	ON	66mph SE	EXIT 3A MIAMI FL 33136
3:29:50 PM	LOC	ON		MACARTHUR CSWY/US-41 MIAMI BEACH FL 33139
3:34:51 PM	LOC	ON		483 WASHINGTON AVE & 5TH ST MIAMI BEACH FL 33139
3:36:45 PM	INB	OF		947 PENNSYLVANIA AVE & 9TH ST MIAMI BEACH FL 33139
			Ignition Off	
4:11:02 PM	INB	ON		927 PENNSYLVANIA AVE & 9TH ST MIAMI BEACH FL 33139
			Ignition On	
4:15:54 PM	INB	OF		109 4TH ST & OCEAN DR MIAMI BEACH FL 33139
			Ignition Off	

MPH

IGNITION ON



# Message Report

Gives all messages sent and received from specific vehicles in the field.

## Goals

Dispute Resolution

## Highlights

- Similar to the Detailed Report but with location removed and message texts and driver acknowledgements shown.
- Report expands to include driver and dispatch messaging when the in-cab Fleet Director Tablet is specified.
- Includes log of ignition status changes, break status and HOS status changes.

## Advantages

- Beneficial for reviewing specific message detail.

*In this actual client report, see when and where each message and driver status change was sent.*



### Message

For 11/5/2012 12:00 AM through 11/8/2012 11:59 PM (Pacific Time)

	<u>Status</u>	<u>Message</u>	<u>Location</u>
<b>VEHICLE NAME: 278 - Marlin Miles</b>			
<b>11/7/2012</b>			
1:05:00 AM	NS	Message Acknowledgement	1543 N BOUDREAU RD & E REDWOOD AVE MANTENO IL 60950
1:05:44 AM		Have you loaded	
	NS	Message Acknowledgement	1543 N BOUDREAU RD & E REDWOOD AVE MANTENO IL 60950
1:06:31 AM	ON	DR 867	1541 N BOUDREAU RD & E REDWOOD AVE MANTENO IL 60950
1:10:45 AM	ON	Driving	1543 N BOUDREAU RD & E REDWOOD AVE MANTENO IL 60950
1:10:51 AM	NS	Message Acknowledgement	1535 N BOUDREAU RD & E REDWOOD AVE MANTENO IL 60950
3:54:33 AM	ON	On Duty	GERALD R FORD FWY/I-196 CASCO TWP MI 49090
4:00:40 AM	NS	Message Acknowledgement	GERALD R FORD FWY/I-196 CASCO TWP MI 49090
4:03:45 AM	ON	Driving	GERALD R FORD FWY/I-196 CASCO TWP MI 49090
4:03:52 AM	NS	Message Acknowledgement	GERALD R FORD FWY/I-196 GANGES TWP MI 49408
4:49:01 AM	ON	On Duty	4498 CENTURY CENTER ST SW & RIVERTOWN CIR SW GRANDVILLE MI 49418
4:50:08 AM	ON	Arrived	4498 CENTURY CENTER ST SW & RIVERTOWN CIR SW GRANDVILLE MI 49418
4:50:15 AM	ON	Arrived	4498 CENTURY CENTER ST SW & RIVERTOWN CIR SW GRANDVILLE MI 49418
4:55:07 AM	NS	Message Acknowledgement	4498 CENTURY CENTER ST SW & RIVERTOWN CIR SW GRANDVILLE MI 49418
4:59:26 AM		have you at the customer reload: bradford white middleville mi load # 519701 you will pu trl# dr868 picking	

MESSAGE

STATUS



## Goals

- Beneficial for sites specific management including time of day.





# Exception Conditions Report

Gives an overview of current alert settings.

## Goals

Vehicle/Asset Management

## Highlights

- Includes a standard set of exception settings such as breaching a geo-fence around a landmark or the use of a vehicle outside of permitted hours.
- Customized settings can also be easily created in the software.

## Advantages

- Beneficial in reviewing exception conditions managed across a fleet.

*In this actual client report, this exception condition is triggered when vehicles spend excessive time loading at the depot.*

Fleet Director®  
teletrac

## Exception Conditions

Condition ID	1	Condition Name	48HrOOS
Condition Type	Out of Service	Next Status	No Selected Status
Zone Type		Zone Radius	0.00
Zone Ref Type		Zone Ref Name	No LandMark_Name
Start Time		Stop Time	
Number of Preset Locates	0	Located Before Throw	100
Time Out	0	Highlight Status	No Audible Alert No

Condition Type	Zone	Condition Name	DEPOT LOADING TIME
Zone Type	Inside	Next Status	Priority Alert
Zone Ref Type	Depot	Zone Radius	0.10
Start Time	07:00 AM	Zone Ref Name	Depot
Number of Preset Locates	0	Stop Time	06:00 PM
Time Out	60	Located Before Throw	60
		Highlight Status	Yes Audible Alert No

Condition ID	4	Condition Name	NEAR HWY 54 SPEED TRAP	..
Condition Type	Zone	Next Status	Priority Alert	
Zone Type	Inside	Zone Radius	12.00	
Zone Ref Type	City Center	Zone Ref Name	HWY 54 SPEED TRAP ALERT	..
Start Time	08:51 AM	Stop Time	08:51 AM	
Number of Preset Locates	0	Located Before Throw	0	
Time Out	100	Highlight Status	Yes Audible Alert No	







# Landmark List Report

Gives a list of all defined landmarks.

## Goals

Vehicle/Asset Management

## Highlights

- Used for customer and terminal locations or other critical business landmarks in order to better manage fleet operations.
- The report provides 30,000 landmarks that can be used for anything from rest stops to known speed traps, to dangerous areas to customer delivery points.

## Advantages

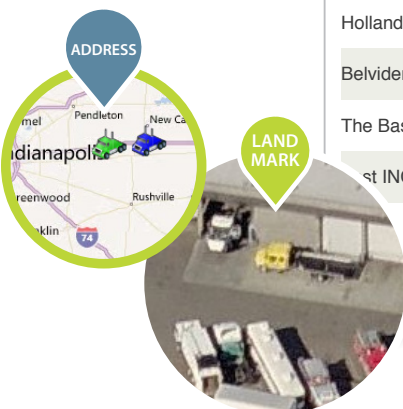
- Beneficial for viewing a clear list of managed locations.

*In this actual client report, see terminals, speed traps, the customer base and key delivery cities set as landmarks for easy reference.*

Fleet Director®  
teletac

## Landmark List

Landmark Name	Address
Terminal El Paso TX	12335 MERCANTILE AVE, EL PASO, TX 79928
Terminal K3	2150 S US-45 52/US-45/US-52/S US HIGHWAY 45 52, KANKAKEE, IL 60901
Terminal KP	5069 FORT HENRY DR/TN-36, TN 37663
	6351 HIGHWAY 41A/US-41A/TN-112, PLEASANT VIEW, TN 37146
Terminal SC	144 - 100 S 7TH ST/US-1/S SEVENTH ST, MCBEE, SC 29101
Hodgkins lot	0 - 0 75TH ST, HODGKINS, IL 60525
Gibbs Trucking-Ft. Worth Drop Yard	9619 CROWLEY RD/FM-731 (N), FORT WORTH, TX 76134
Peterbilt Denton	3200 AIRPORT/FM-1515/AIRPORT RD/W AIRPORT RD, DENTON, TX 76207
HWY 54 SPEED TRAP ALERT OROGRANDE	Orogrande, NM
HWY 54 SPEED TRAP ALERT CARRIZOZO	Carrizozo, NM
Holland OH	Holland, OH
Belvidere IL	Belvidere, IL
The Base	600 E Las Colinas Blvd, Irving, TX 75039
st INC	6843 US-51, Hazelhurst, WI 54531
Site	12297 Mercantile Ave, El Paso, TX 79928





## Goals



# Subfleet List Report

Gives a list of all user-defined subfleets with the corresponding assets and vehicles.

## Goals

Vehicle/Asset  
Management

## Highlights

- Allows rollup data views by subfleet where available.
- Can be used in lieu of the Vehicle List Report when subfleet are defined.

## Advantages

- Beneficial for managing shifts, territories, regions and vehicle types for areas of management responsibility.

*In this actual client report, see sample assets in a list view broken down by subgroup.*

Fleet Director®  
teletac™

## Subfleet List

### Subfleet:Day Shift

VEH NAME	VIP	YEAR	Make, Model, Color	ST	License	VIN	COMMENTS
551 - Williams Clarke	12.0.93.19	2009	Peterbilt 368 Blue	IL	P685125	102910	
564 - Kent Lovell	12.0.84.41	2010	Peterbilt 386 Blue	IL	P302601	1XPHD49X6AD102913	
539U - Ernesto Sanchez	12.0.92.107	2012	Peterbilt 386 Blue	IL	P717004	CD128522	

### Subfleet:Weekend Shift

VEH NAME	VIP	YEAR	Make, Model, Color	ST	License	VIN	COMMENTS
525 - Jim Oconner	12.0.93.18	2006	Peterbilt 379 Blue	IL	P329705	734169	
542 - Mike Middleton	12.0.92.143	2006	Peterbilt 379 Blue	IL	P314210	N734186	
551 - Williams Clarke	12.0.93.19	2009	Peterbilt 379 Blue	IL	P685125	102910	
562 - Robert Creakman	12.0.84.42	2010	Peterbilt 386 Red	IL	P661311	1XPHD49X9AD102906	
564 - Kent Lovell	12.0.84.41	2010	Peterbilt 386 Blue	IL	P302601	1XPHD49X6AD102913	
566 - Rob Font	12.0.84.47	2010	Peterbilt 386 Blue	IL	P212677	1XPHD49XXAD102915	
567 - Daniel Thomason	12.0.84.48	2010	Peterbilt 386 BLUE	IL	P101399	1XPHD49X1AD102916	
568 - Jim Oconnor	12.0.84.44	2010	Peterbilt 386 Blue	IL	P112311	1XPHD49X3AD102917	
570 - Aaron Randle	12.0.84.46	2010	Peterbilt 386 White	IL	P912336	1XPHD49X0AD102924	
571 - Chris Rolls	12.0.92.175	2011	Peterbilt 386 Red	IL	P843943	1XP5DB9XX6N646016	
572 - Aaron Randle	12.0.92.184	2012	Peterbilt 386 White	IL	P996997	CD128506	

SUB  
FLEET

VIN



# Vehicle Mileage By State Report

Gives miles traveled per state, per vehicle, for a selected date range.

## Goals

Monitoring

## Highlights

- Provides a breakdown of miles driven in each US state, per vehicle.
- Report can be run for a single vehicle, selected vehicles or the entire fleet.
- User can select the required date range.

## Advantages

- Beneficial for state fuel tax reporting.

In this actual client report, see travel distance per vehicle broken down by state.

Fleet Director<sup>®</sup>  
teletrac

## Vehicle Mileage By State

For 01/01/2013  
Through 01/31/2013 (UTC Time)

### Vehicle: 8030054

<u>State</u>	<u>Travel Distance (Miles)</u>
IL	2035.73
Total for 8030054:	2035.73

### Vehicle: 8030055

<u>State</u>	<u>Travel Distance (Miles)</u>
IL	1874.82
IN	1273.25
Total for 8030055:	3148.07

### Vehicle: 8099002A

<u>State</u>	<u>Travel Distance (Miles)</u>
IL	975.34
Total for 8099002A:	975.34

### Vehicle: 8226001A

<u>State</u>	<u>Travel Distance (Miles)</u>
IL	1433.87
IN	26.46
WI	91.71
Total for 8226001A:	1552.04

STATE



State

IL

IN

WI

Total for 8226001A: